

21ST ANNUAL HCANJ ASSISTED LIVING CONFERENCE

P R E S E N T E R

David Mammina, RA, AIA
Vice President, Deputy Market Director
Director of Health Care and
Senior Living Practice



David Mammina, RA, AIA

Vice President
Deputy Market Director,
Director of Health Care and
Senior Living Practice

40 years of experience;
36 years as a licensed Architect
25 years experience in Health Care

Extensive experience in all
facets of Health Care:
Adult Day Health Care
Physical and Occupational Therapy
Centers
Dialysis
Emergency Rooms
Assisted Living
Nursing Homes





Who is H2M?

86 years of service to the communities we work with

435+ staff including over 100 architects and 112 engineers

Full Service Architectural and Engineering Firm

Offices in New Jersey:
Parsippany,
Wall Township

Offices in New York:
Westchester, Suffern,
Albany, Manhattan,
Melville, Riverhead





TRENDS IN BUILDING DESIGN

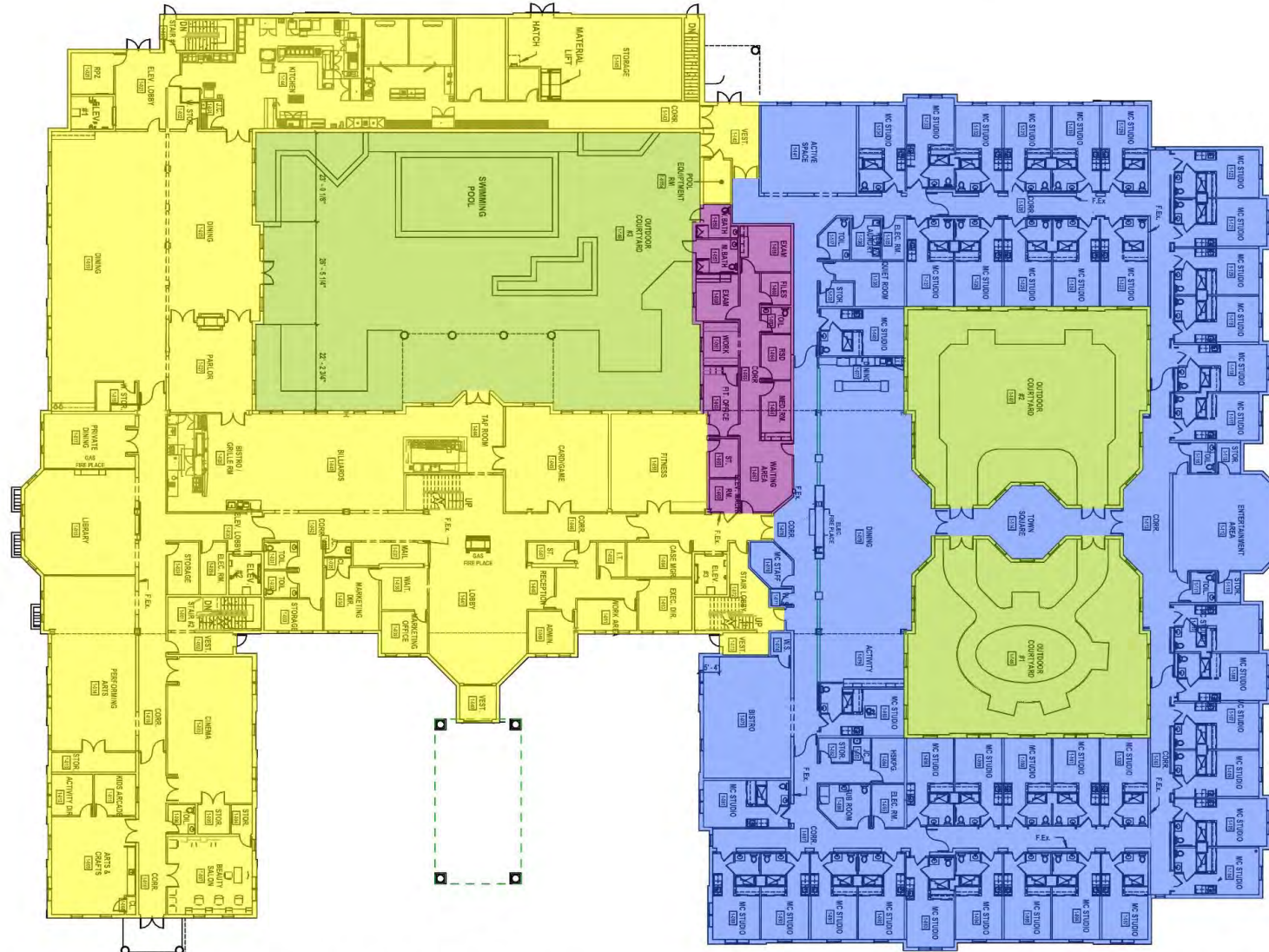
- Memory Care, Memory Care, Memory Care
- Enhanced Amenity Spaces, Fit and Finish
- Construction Systems for Affordability and Speed





Assisted Living Wing

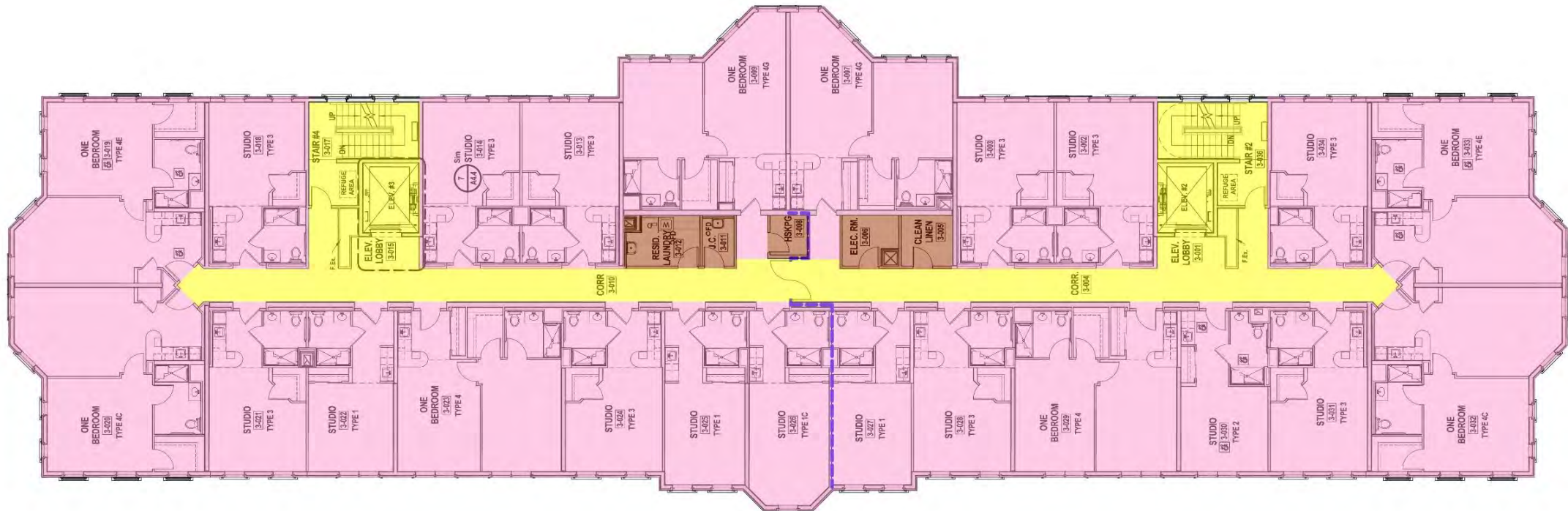
Memory Care Wing



- MEMORY CARE LIVING SPACE
- WELLNESS CENTER
- RECREATION
- ASSISTED LIVING ACTIVITY AND DINING SPACE

TYPICAL FLOOR PLAN

- MECHANICAL
- CIRCULATION
- RESIDENT SUITES



ASSISTED LIVING

Room List and Dimensions:

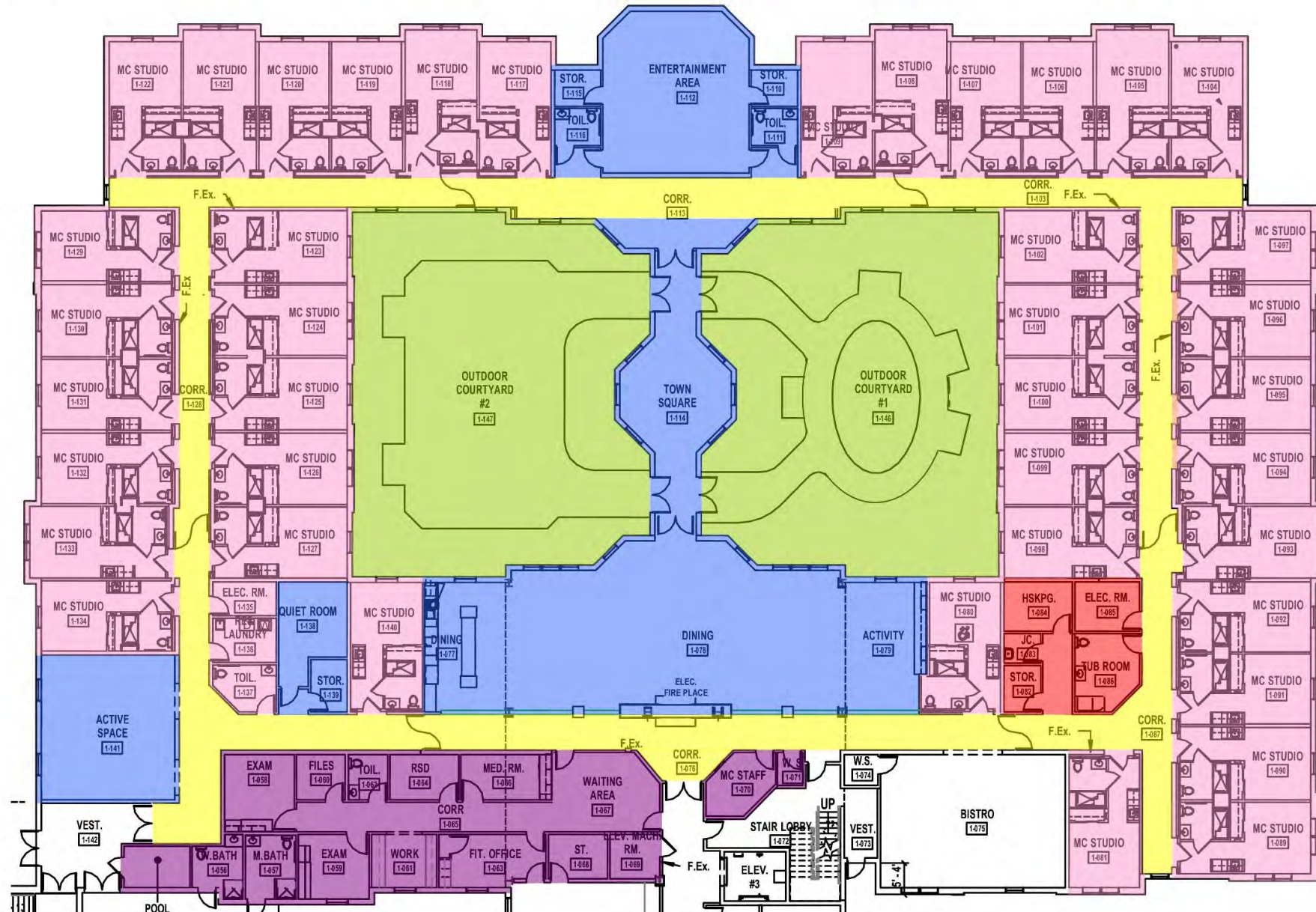
- Red (Service/Support):** STORAGE (1445), MATERIAL LIFT, HATCH, KITCHEN (1444), J.C. (1424), W. STOR. (1422), RPZ (1420), ELEV. LOBBY (1421), CORR. (1443), CASE MGR. (1454), EXEC. DIR. (1453), L.T. (1452), WORK AREA (1451), ST. (1447), RECEPTION (1446), ADMIN. (1448), MAIL (1437), WAIT. (1438), MARKETING OFFICE (1439), MARKETING DIR. (1434), CL. (1433), STORAGE (1433), TOIL. (1431), TOIL. (1432), ELEV. LOBBY (1430), ELEC. RM. (1429), STORAGE (1429).
- Green (Pool/Courtyard):** POOL EQUIPMENT RM (1455), OUTDOOR COURTYARD #3 (1448), SWIMMING POOL (23' - 0 1/8" x 26' - 5 1/4" x 22' - 2 3/4").
- Blue (Recreation/Common):** FITNESS (1455), CARD/GAME (1445), TAP ROOM (1444), BILLIARDS (1443), BISTRO / GRILLE RM (1428), DINING (1425), PARLOR (1427), DINING (1419), PRIVATE DINING (1417), LIBRARY (1415), PERFORMING ARTS (1414), KIDS ARCADE (1411), ARTS & CRAFTS (1409), CINEMA (1403), BEAUTY SALON (1407), STOR. (1404), STOR. (1405), TOIL. (1406), ACTIVITY DIR. (1412), STOR. (1413), CL. (1410).
- Yellow (Circulation/Utility):** LOBBY (1441), UP, F.Ex., CORR. (1440), CORR. (1442), CORR. (1416), CORR. (1415), VEST. (1440), VEST. (1442), STAIR #2 (1401), DN, F.Ex.

100

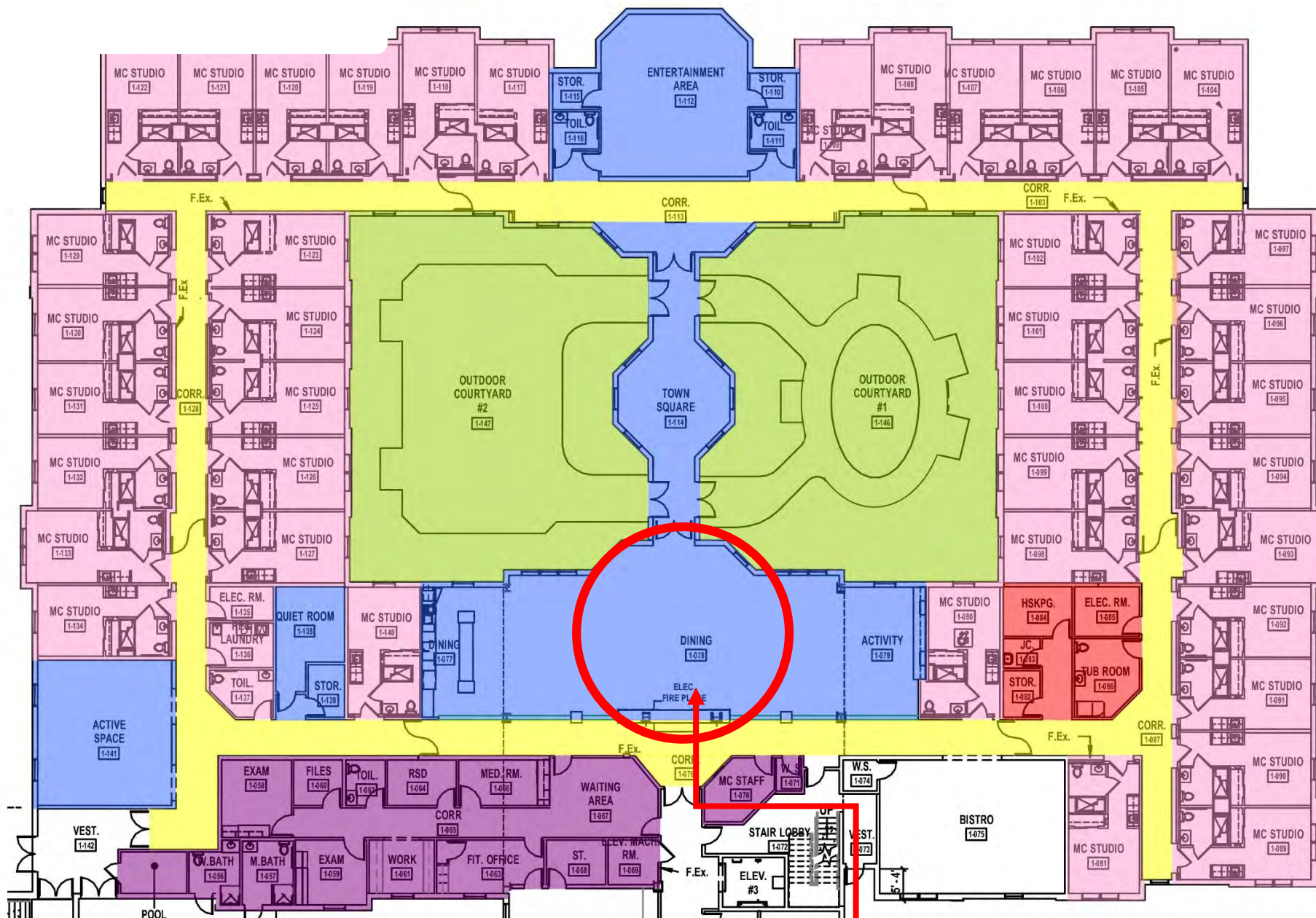
11/11/2019

100

Memory Care Wing



- STAFF / PUBLIC
- CIRCULATION / MECH
- LIVING SPACE
- RESIDENT SUITES
- WELLNESS CENTER
- RECREATION



- STAFF / PUBLIC
- CIRCULATION / MECH
- LIVING SPACE
- RESIDENT SUITES
- WELLNESS CENTER
- RECREATION

Reception and Dining

Reflections

Wellness Center

REFLECTIONS

Entrance to Memory Care Wing





Reception Control Point



Reception Area / Dining Fireplace

Memory Care Dining / Serving Area

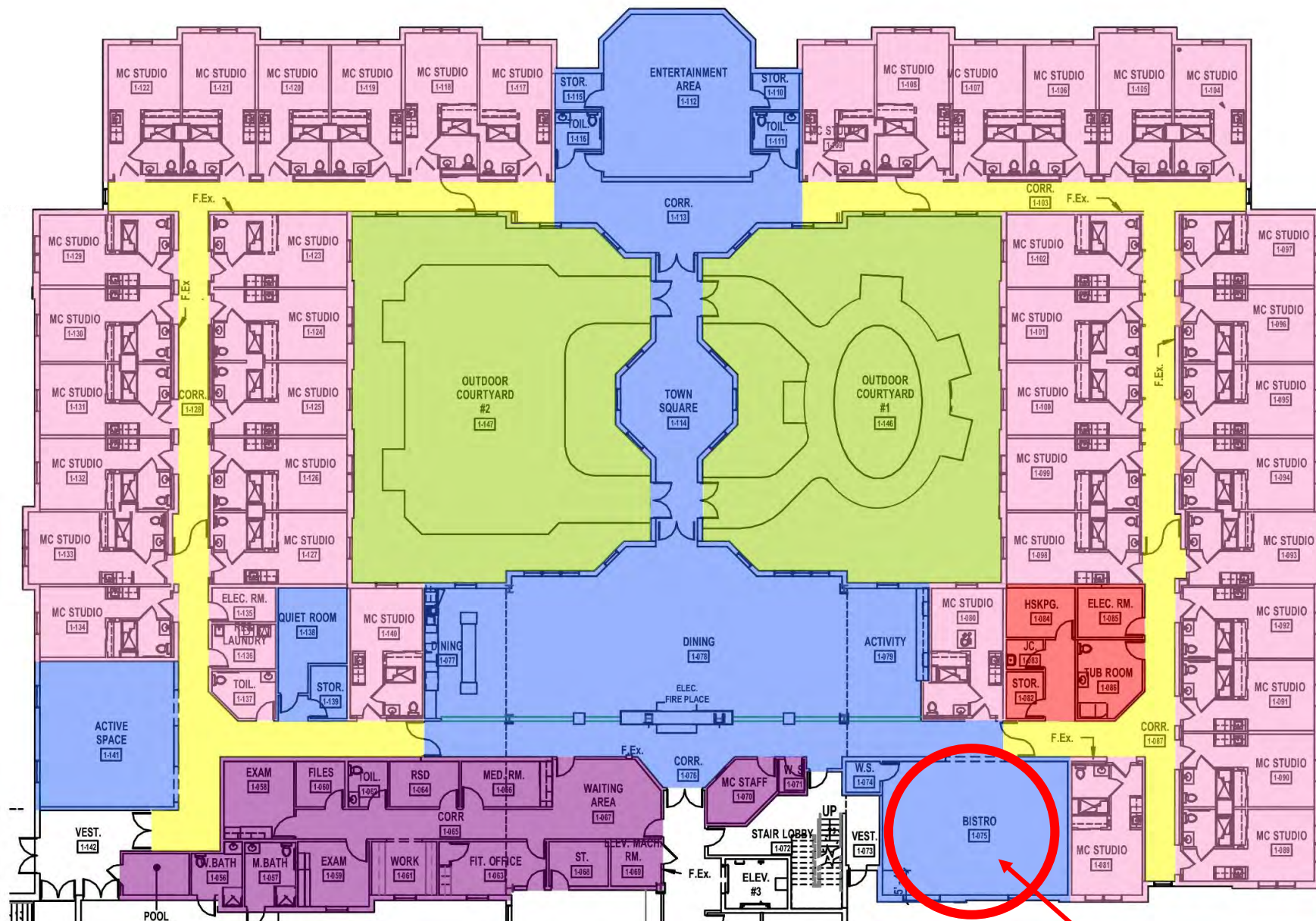






View Towards "Town Square"





- STAFF / PUBLIC
- CIRCULATION / MECH
- LIVING SPACE
- RESIDENT SUITES
- WELLNESS CENTER
- RECREATION

Bistro

Bistro

Bistro



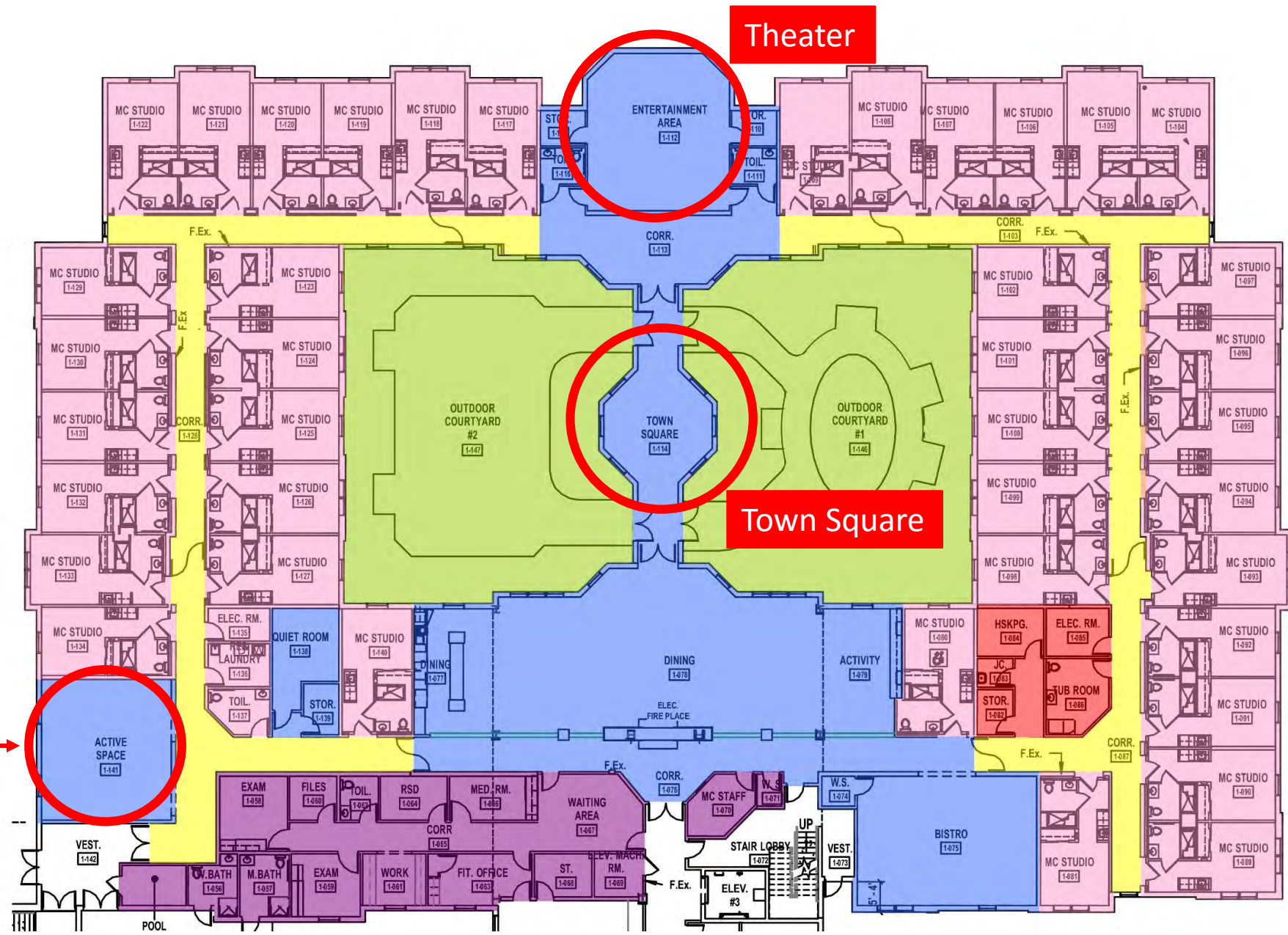




Theater

Town Square

Activity Room



- STAFF / PUBLIC
- CIRCULATION / MECH
- LIVING SPACE
- RESIDENT SUITES
- WELLNESS CENTER
- RECREATION



Activity Room



Theater



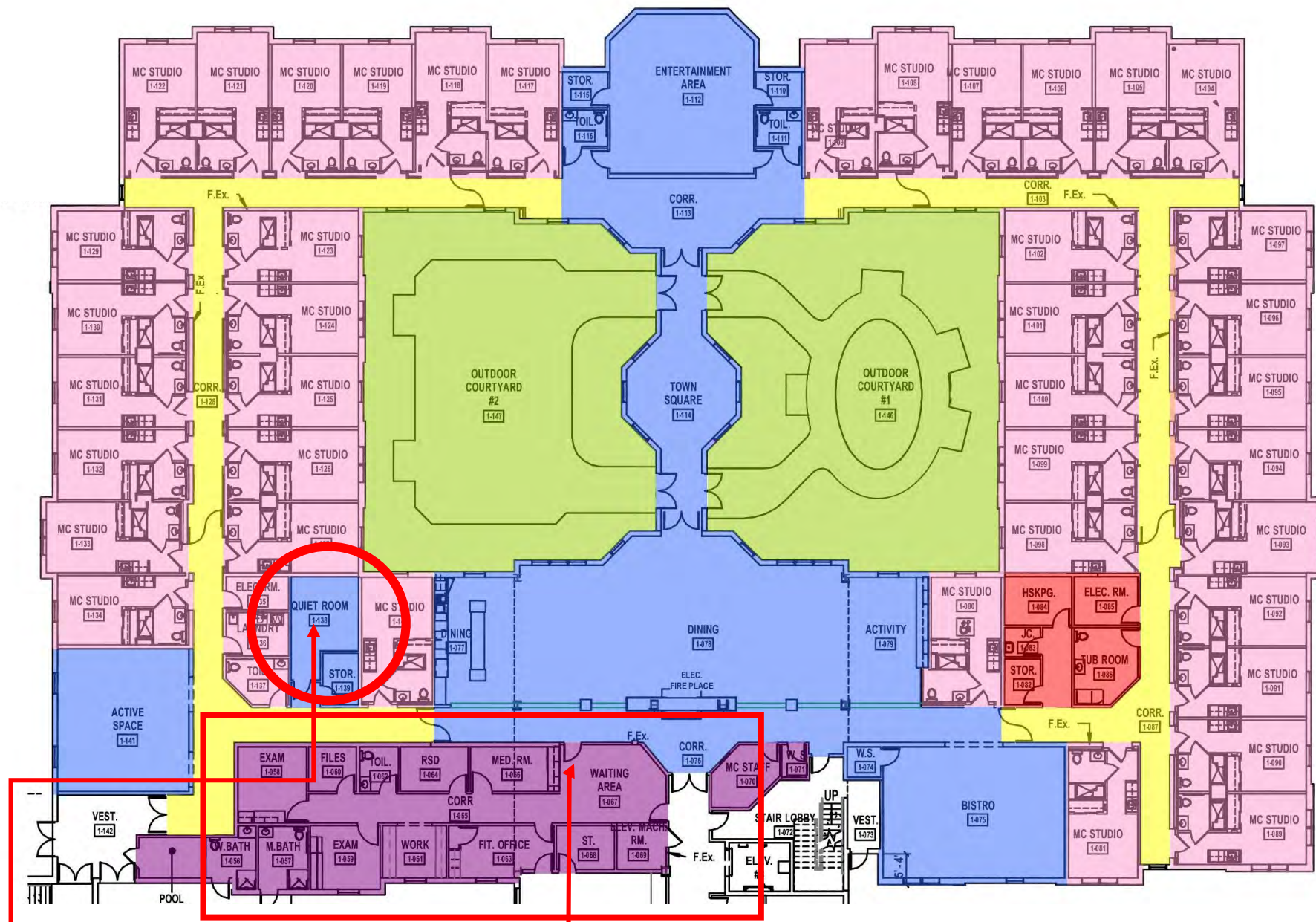
View Toward “Town Square”



Tactile / Arts and Crafts / Puzzle Area



Small Group Activity



- STAFF / PUBLIC
- CIRCULATION / MECH
- LIVING SPACE
- RESIDENT SUITES
- WELLNESS CENTER
- RECREATION

Quiet Room

Wellness Center

Quiet Room





Wellness Waiting Area





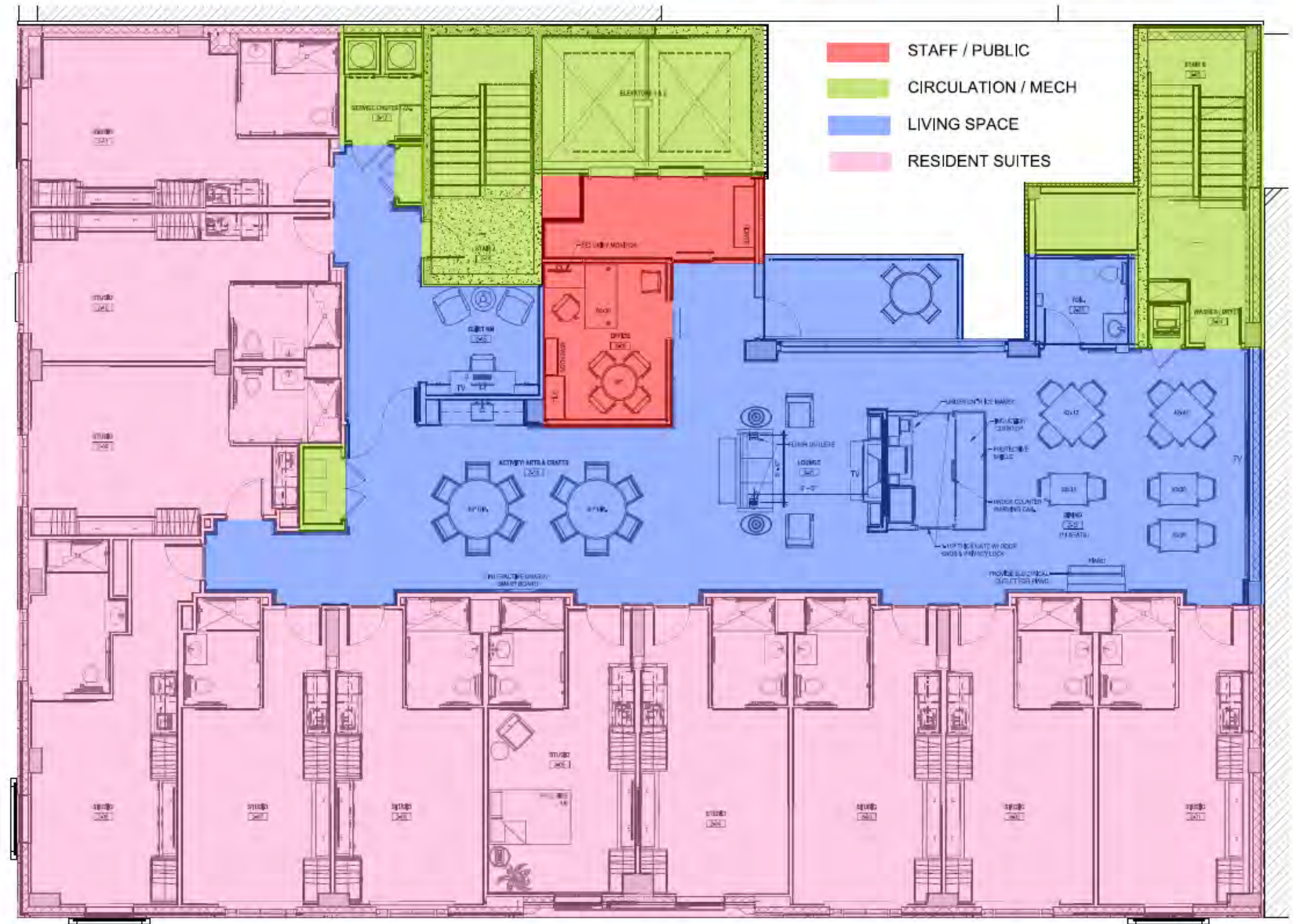
Medication Room



Sun and Shade Patio

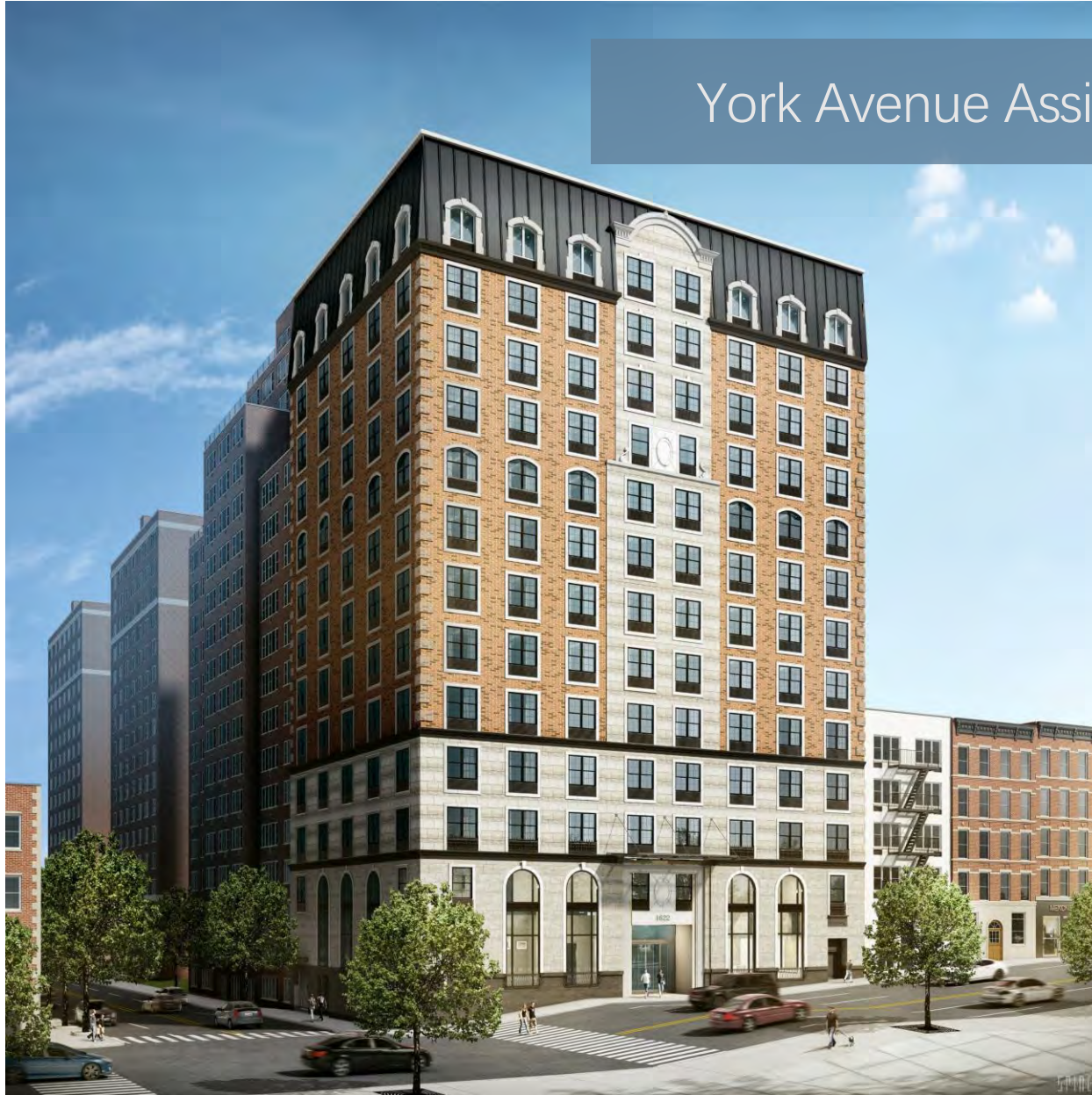


16 Story Urban Memory Care Facility Manhattan, NY



Trending Aggressively

York Avenue Assisted Living





Construction
Systems for
Affordability
and Speed



Metal Panel
Walls and
Concrete
Plank



Independent Living and Assisted Living

- Enhanced Amenity Spaces, Fit and Finish

Lobby





Library



Private Family Dining Room

Snack Bar / Pizza / Burgers / Sandwiches





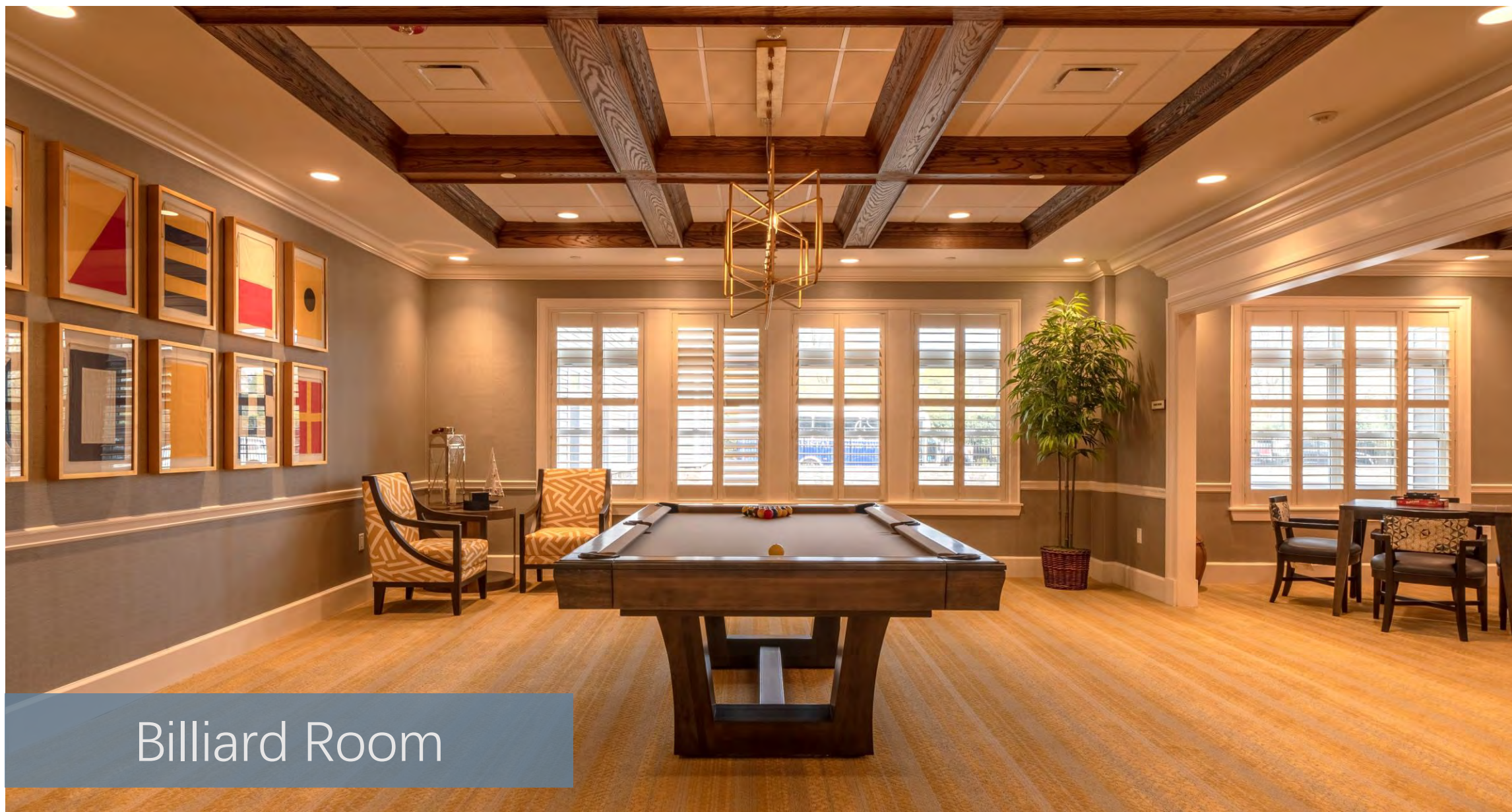
P.T. Fitness Center

Beauty Salon



Bar / Bistro Signage





Billiard Room

Card and Game Room





Mailboxes

Bar Bistro



Screening Room





Dining Room

Dining Room



Sun Room





Moderately Priced Facility













STRENGTH

DETERMINATION



ADAPTIVE
FEATURES
THAT CREATE
A LESS
INSTITUTIONAL
ENVIRONMENT





Patio Area

Gazebo – Walking Path





Fire Pit



Gardening / Potting Area



Putting
Green

Bocce
Court

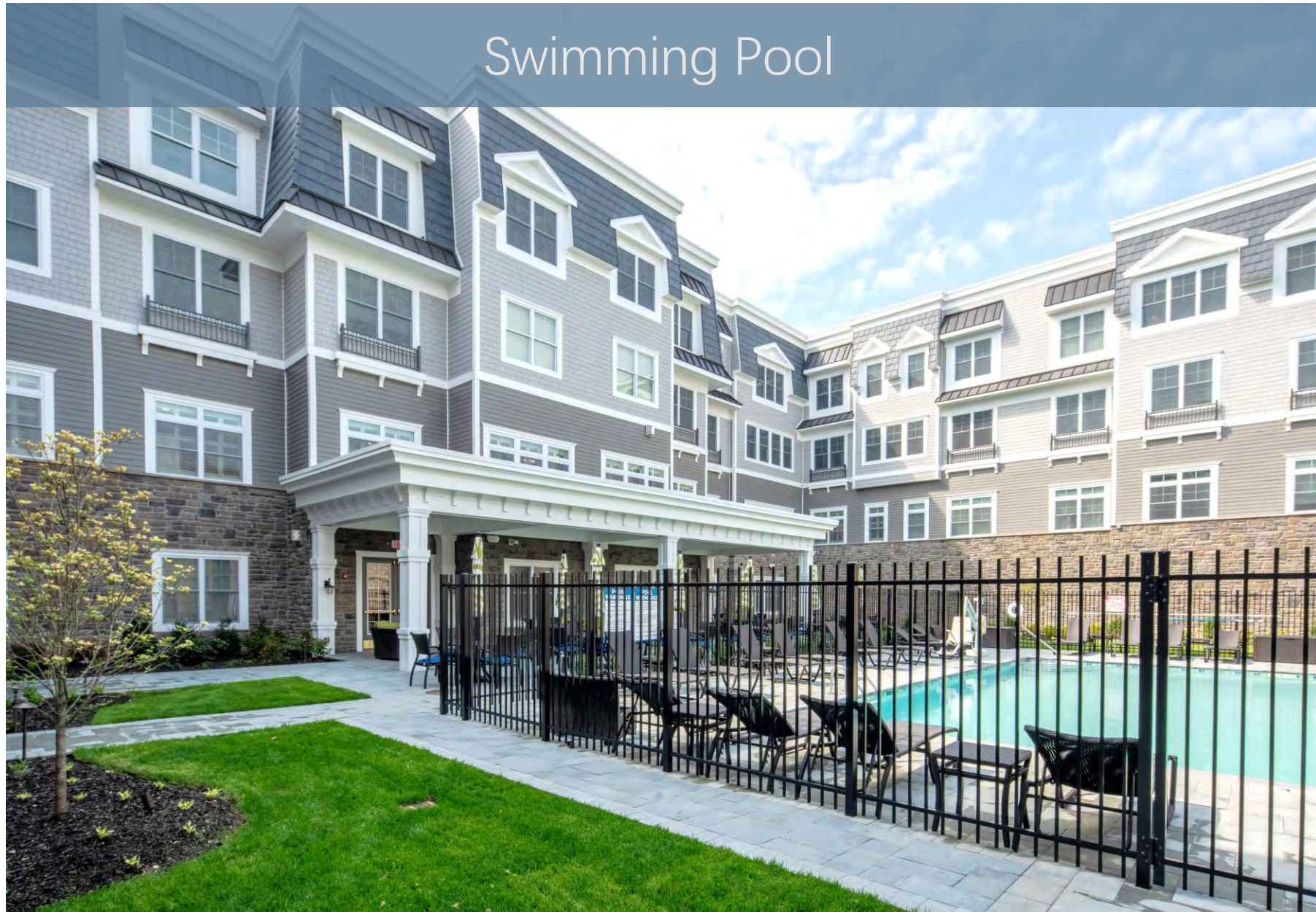
Gazebo

Walking
Paths

Sun and Shade Patio

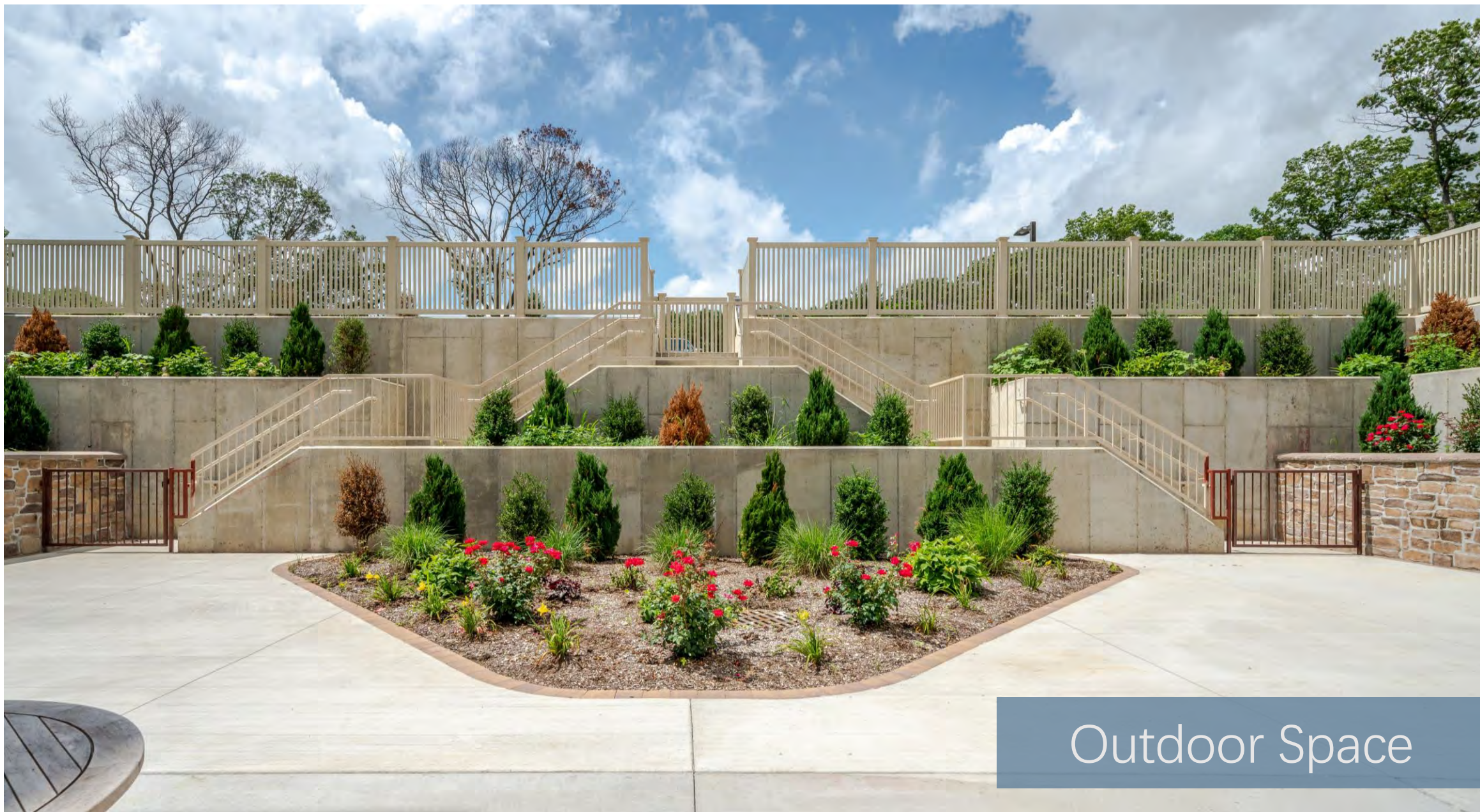


Swimming Pool



Sun and Shade Patio





Outdoor Space

USER FRIENDLY DESIGN ELEMENTS



Aesthetic Shower Bars and Seat



Swing-up Grab Bar - Rotatable



Traditional Gab Bars, Vinyl Flooring / Chrome Grab Bars, Porcelain Tile



Granite and Wood Handicapped Accessible Sink / Walk-In Tub





Traditional Handrail / Aesthetic Handrail

TECHNOLOGICAL ADVANCES

Legionella -
A Deadly
Danger





The **FRESH, PURE, HEALTHY** Choice!

3i PHSI Pure Water Technology's newest system eliminates the environmental and workplace impact of bottled water systems while supplying FRESH, PURE and HEALTHY drinking water at the point-of-use.



CleanContact™

Anti-microbial touchpad and surrounding surfaces manufactured and tested to protect against cross-contamination of germs within the workplace.



24/7-System Monitoring

At the core of PHSI's patented technology is a microprocessor that controls and monitors activated oxygen injection, filter life, water quality, and all other system functions 24 hours a day. Only the 3i can deliver this level of programmability and performance that keeps your water fresh and pure.



Activated Oxygen Injection

Oxygenates the water during the ATS process, delivering FRESHNESS YOU CAN TASTE™.



ATS-Auto Tank Sanitization

Eliminates microbiological contamination and does away with the tedious and often overlooked task of sanitizing the holding tank.



Pure Touch Dispense

The ergonomic design delivers an optimum dispense height and spacious dispense area for large containers which prevents germ contamination of the dispense nozzle.



The Pure Water Technology 3i Process



Sediment Filter

Sediment:

- Dirt, Rust, Silt



Carbon Block Filter

Organic:

- Chemicals, Solvents, Chlorine



80 GPD Reverse Osmosis Membrane

Inorganic:

- Lead, Mercury, Arsenic



Granular Activated Carbon Filter

Final Polish



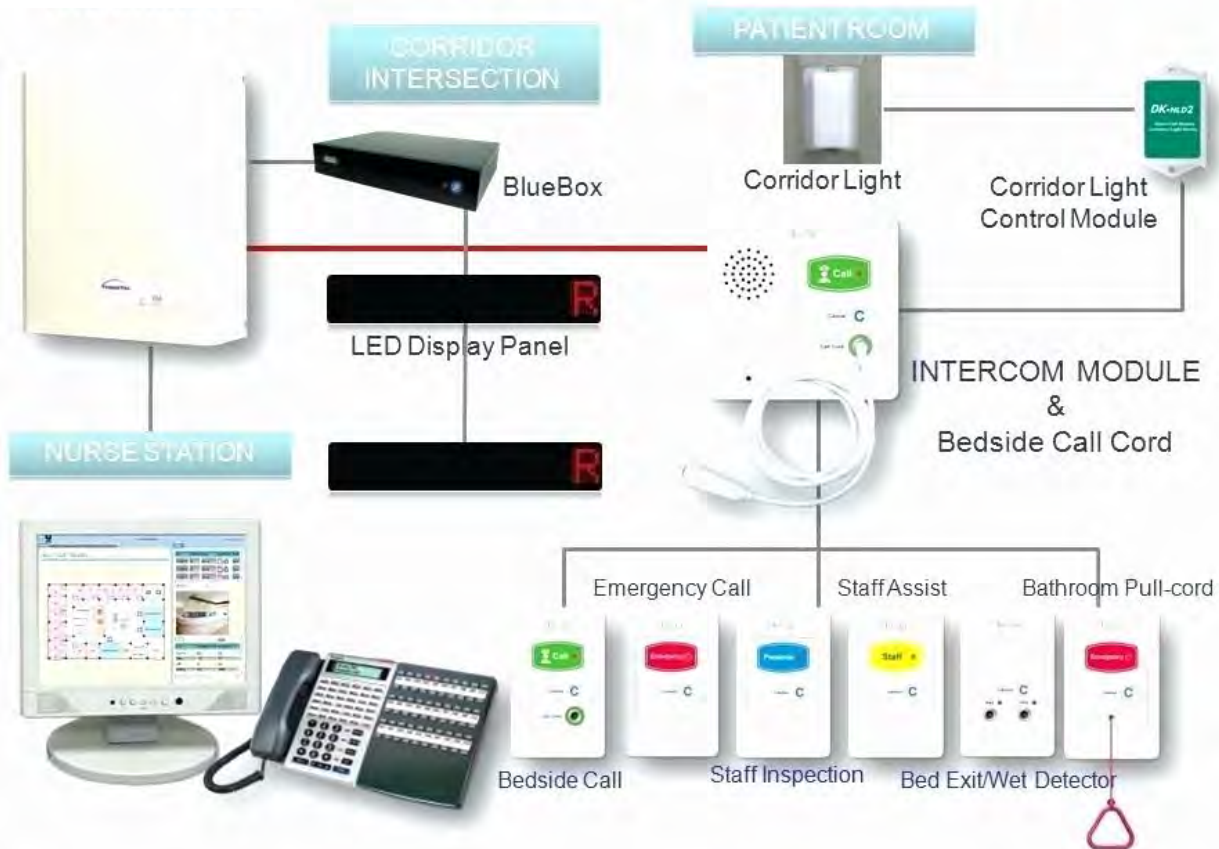
Activated Oxygen Injection

Microbiological:

- Bacteria, Viruses, Parasites

Security Resident Safety Protection

System Configuration



Snoezelen Sound Shell Chair

Soft Cushioned Chair that incorporates music and vibration. The shape and construction of the Sound Shell make it perfect for both sound isolation and excellent acoustics. Its chamber-like shape and upholstered interior cancels out most outside noise, providing a unique environment for meditation, and relaxation





Snoezelen Room, Multi-Sensory Environments for Treating Dementia



Step Lights



Sundowning



Sundowning Lighting



Thanks You.